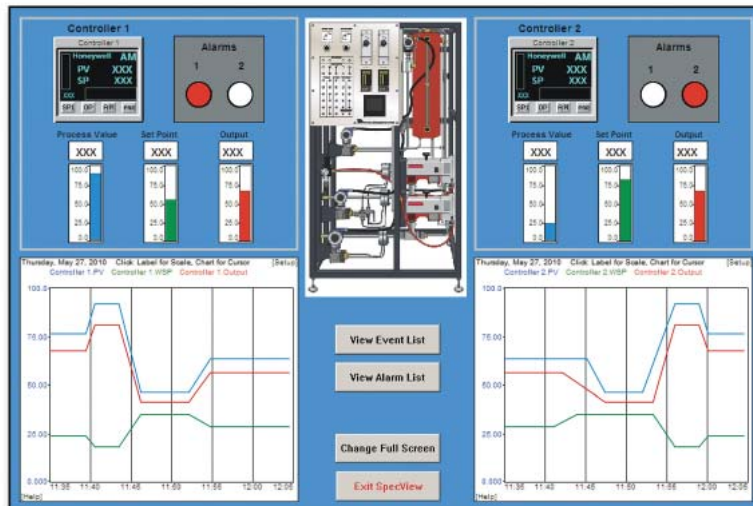




TE37DCS

DISTRIBUTED CONTROL SYSTEM

Easy-to-use software that connects to the Control and Instrumentation Study Station (TE37) for remote control and monitoring of processes (distributed control).



KEY FEATURES

- Industry-standard supervisory control and data acquisition (SCADA) software, with colourful, easy-to-use on-screen mimics of the processes
- Improves students' understanding of industrial process control
- Mimics and controls both controllers of the TE37
- Includes high-specification computer, large monitor, keyboard and mouse
- Controls, monitors and logs all important process controller parameters
- Real-time displays of process trends and alarms



DISTRIBUTED CONTROL SYSTEM

DESCRIPTION

A computer-control package for use with TecQuipment's Control and Instrumentation Study Station (TE37), this product allows remote control and data acquisition. This package remotely controls and collects data from both controllers.

When used with TecQuipment's study station (TE37), computer control improves the student's experience of industry-standard process control.

The package includes a high-specification computer, with large-screen monitor, keyboard and mouse. The computer includes connections for direct communication with the controllers on the study station. A suitable Microsoft® Windows® operating system is already installed on the computer as supplied.

The industry-standard control software includes a graphical display configuration specially made by TecQuipment for use with the TE37 study station. Just as in an industrial environment, the software configuration mimics the real process. The user (operator) can easily see what happens at the remotely controlled process as they adjust its performance at the computer.

The software logs all events and any controller alarm conditions. The data is shown in real-time (as a trend) or logged for later examination. The software mimic (operator interface) and all data is in full colour for ease of use.

The easy-to-use software is fully editable, so the students may change the mimic or how the software works. They may even create their own configurations.

STANDARD FEATURES

- Supplied with comprehensive user guides
- Five-year warranty
- Made in accordance with the latest European Union directives
- ISO9001 certified manufacturer

LEARNING OUTCOMES

When used with the Control and Instrumentation Study Station (TE37), the remote control and monitoring of control processes including:

- Level
- Pressure
- Temperature
- Cascade control
- Coupled interactive control
- Decoupled interactive control
- Ratio control
- Feedforward control
- Feedforward-feedback control
- Split range control

ANCILLARY FOR

- Control and Instrumentation Study Station (TE37)

ESSENTIAL SERVICES

ELECTRICAL SUPPLY:

Computer power to customer's needs

BENCH SPACE NEEDED:

Room for a computer, a mouse, a keyboard and a monitor

OPERATING CONDITIONS

OPERATING ENVIRONMENT:

Laboratory

STORAGE TEMPERATURE RANGE:

-25°C to +55°C (when packed for transport)

OPERATING TEMPERATURE RANGE:

+5°C to +40°C

OPERATING RELATIVE HUMIDITY RANGE:

30% to 95% (non-condensing)

SPECIFICATIONS

TecQuipment is committed to a programme of continuous improvement; hence we reserve the right to alter the design and product specification without prior notice.

SOFTWARE:

Full colour, industry-standard supervisory control and data acquisition (SCADA)

WEIGHT:

Computer, keyboard, mouse and monitor, approximately 25 kg